

## Trends and Multifractal Analyses of Precipitation Data from Shandong Peninsula, China

Meng Gao and Xiyong Hou  
Key Laboratory of Coastal Zone Environmental Processes,  
Yantai Institute of Coastal Zone Research, CAS, No.17 Chunhui Road, Yantai, 264003, China

---

**Abstract: Problem statement:** Water shortage is a very serious problem in Shandong Peninsula, which is one of the most rapidly developed zone in China. As the major source of water supply is in this area, precipitation is crucial to sustainable development in Shandong Peninsula. The purpose of the present study is to investigate the trend and characteristics of precipitation during the last 4 decades. **Approach:** The data, both monthly and annual precipitation, were collected from six gauge stations. Both classical statistical and nonlinear analyses for time series analysis were performed. **Results:** First, it was found that the trend of precipitation in this area was decreasing. Second, the statistical analyses showed that there were two precipitation regimes and the turning point was around 1980. This time is in line with that about climate change in some recent references. Third, the complexity of precipitation time series was also analyzed by nonlinear (multifractal) approach. Frequency analysis showed that the dominant periods of Fractal oscillations were consistent with that obtained in some previous studies. **Conclusion/Recommendations:** The decreasing trend would be considered in future water resource management. Moreover, the findings of this study are of interest from the perspective of climate change and deserve more research study in the future.

**Key words:** Precipitation data series, piecewise regression, fractal dimension, climate change, shandong peninsula, multifractal analyses, intervention analysis, linear regression

---

### INTRODUCTION

Currently, there is growing concern around the world about global climate change and its projected continuation. For example, large changes in precipitation patterns have been observed within the last few decades (Onof and Arnbjerg-Nielsen, 2009). As we know that precipitation plays an important role in human activities, such as agricultural production and urban water supply (Parida and Moalafhi, 2008). Changes in precipitation are directly related to human living and production, therefore, trends and characteristics of precipitation have drawn a lot of public concern (Label and Ali, 2009; Pal and Al-Tabbaa, 2009).

Shandong Peninsula (also referred to as a Jiaodong peninsula in literatures), located in Shandong Province, is the biggest peninsula in China. It generates 70% of the total GDP of the province and its export and foreign investment accounts for 80% of that for Shandong province while its population and land area only accounts for 50%. As this area is frequently affected by marine monsoons, the climate is characterized by rain

during the summer and autumn and a dry winter and spring. With the rapid population growth and industrialization, Shandong Peninsula has suffered a very serious problem of water shortage in recent years (Wang *et al.*, 2003). So, several efforts have been taken to mitigate the adverse consequence of water shortage, such as constructing a water reservoir (Zheng *et al.*, 2008). Since precipitation is always the major water supply in Shandong Peninsula, then the change in precipitation regime has a crucial impact on local social and economic development. Analyzing the trends and characteristics is the first step to understanding the available water supply and making reasonable policies for water resource management in the future.

Generally, changes of precipitation or other meteorological variables are not easily to model theoretically. Instead, classical approaches that rely on empirically measured data (time series) of climate are still widely used nowadays. Moreover, some new methods are also proposed within the theory of chaos (Higuchi, 1988; Kalauzi *et al.*, 2005), in which the Fractal dimension of the time series is measured. Fractal dimension value is a quantitative measure of the

---

**Corresponding Author:** Meng Gao and Xiyong Hou, Key Laboratory of Coastal Zone Environmental Processes,  
Yantai Institute of Coastal Zone Research, CAS, No.17 Chunhui Road, Yantai, 264003, China

complexity of time series and this method is extended as a standard method which is also referred to as multifractal analysis. In this study, both classical and multifractal methods are performed to reveal the trends and characteristics of precipitation in Shandong peninsula during the past four decades.

### MATERIALS AND METHODS

**Data:** For the present study, the time series of the monthly precipitation from 6 gauge stations will be used. For five stations, the time series span from 1961-2008 and that for the other station is from 1964-2008. Figure 1 presents the locations of the five gauge stations. From Fig. 1, it can be obviously seen that the six gauge stations are broadly distributed in the study area. Particularly, five of them are along the coastline, where the coastal cities are also located. Therefore, the result of the present study can be further used in analyzing the impact of precipitation regime change on local socioeconomic development. Details of the locations and the period of observation have been furnished in Table 1.

**Intervention analysis:** In order to analyze the change of precipitation regime, an intervention analysis together with a split sample 't'-test is needed. Originally, the aim of intervention analysis is to identify and analyze for any sudden changes which might disqualify the time series of precipitation as coming from one population. Here in the present study, it is used to identify the turning point of the precipitation regime. The technique Cumulative Sum (CUSUM) is usually used to detect any possible intervention in specified time series. Assume,  $x_1, x_2, \dots, x_n$  are the annual precipitation time series over  $n$  years, then the CUSUM value ( $y_i$ ) at any time  $i$  is given by Eq. 1:

$$y_i = (x_i + x_{i-1} + x_{i-2} + \dots + x_1) - n_i \cdot (\sum x_i / n) \quad (1)$$

where,  $n_i$  is the time-scale position of a datum. The suspected point of intervention can be identified graphically in virtue of the plot of computing CUSUM vs. time. Then the precipitation series will be split into two samples by this point and statistical analysis (split sample 't'-test) can be done. A split sample 't'-test can be easily completed using some statistical software packages such as R-package or Statistical Toolbox in Matlab Environment. The destination of intervention analysis here is to reveal whether there is a significant

change of precipitation regime and when this change occurs.

**Piecewise regression analysis:** To further reveal the trend of precipitation, piecewise linear regression analyses of annual precipitation are performed. Once precipitation regime changes, a single linear model may not provide an adequate description of the relationship between average annual precipitation and time. A nonlinear model may not be appropriate either. However, piecewise linear regression is more competitive since it is a form of linear regression that allows multiple linear models to be fit to the data for different ranges of explanatory variables. Piecewise regression models are 'broken-stick' models, where two or more lines of different slopes are joined at unknown points, called 'breakpoints' (Toms and Lesperance, 2003). Breakpoints can be used as estimates of thresholds and are used here to determine the turning point of the precipitation regime.

**Multifractal analysis:** For one-dimensional data series, Fractal Dimension (FD hereafter for simplicity) is frequently calculated to represent the signal complexity. Different numerical methods have been developed to compute FD (Higuchi, 1988; Kalauzi *et al.*, 2005) and the consecutive difference method will be applied in this study. We do not want to describe too much about the consecutive difference method and the rationale and computation details can be found in the following references (Kalauzi *et al.*, 2005; 2009; Millan *et al.*, 2008).

FD of a signal can be calculated as a whole only if it is supposed to be monofractal. Such signals are characterized by a uniform FD no matter what part of the signal is analyzed. However, such signals are extremely rare in real world. Instead, many real signals show the property of multifractal and require a more complex treatment, in which Fractal dimension should be measured only within a moving window (of appropriate length, i.e. Number of samples and moving with appropriate step). Fractal dimension was then numerically calculated, within a moving window, for each one of its successive positions (Kalauzi *et al.*, 2009; Millan *et al.*, 2008). If we denote the window Fractal dimension with,  $FD_w$  these values might be treated as being dependent on time, that is  $FD_w = f(t)$ . Like any other time dependent quantity,  $FD_w$  may also exhibit different oscillatory properties. Therefore, the choice of optimal window length should be attended carefully, since different signal properties can be addressed with different window lengths.

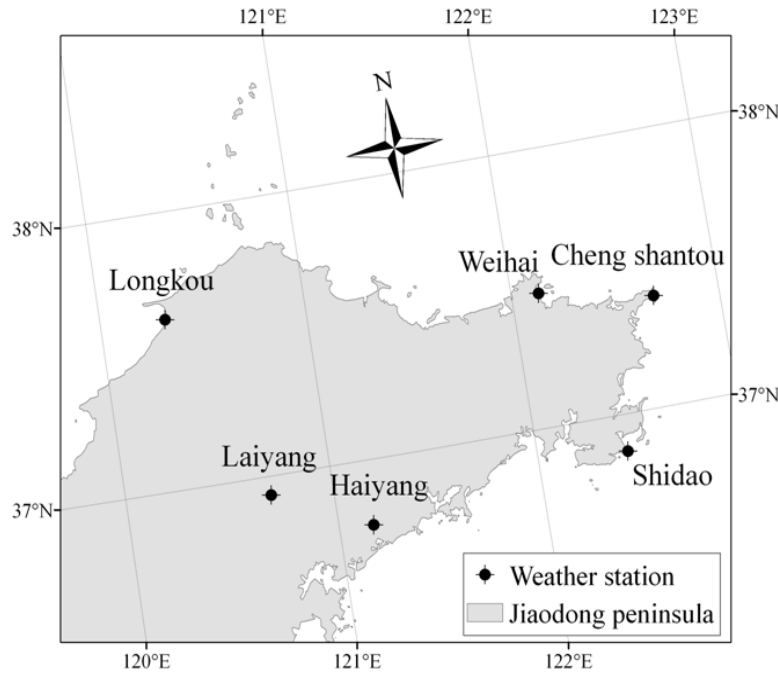


Fig. 1: Location of rain gauge stations in Shandong peninsula

Table 1: Details of location of rain gauge stations and precipitation statistics at six stations

Gauge station	Location		Period of data	Precipitation statistics up to 1980 (annual)			Precipitation statistics for the entire period (annual)		
	Latitude	Longitude		Average	Std.	CV	Average	Std.	CV
Shidao	36°52'N	122°26'E	1961-2008	835	163	0.195	738	191	0.256
Chengshantou	37°24'N	122°41'E	1961-2008	718	146	0.203	642	181	0.282
Weihai	37°29'N	122°19'E	1964-2008	708	155	0.219	680	179	0.263
Longkou	37°37'N	120°19'E	1961-2008	631	128	0.202	567	131	0.231
Laiyang	36°55'N	120°42'E	1961-2008	734	191	0.261	653	186	0.284
Haiyang	36°46'N	121°10'E	1961-2008	783	252	0.322	688	219	0.318

For calculation of Fractal oscillations, due to the low-pass filtering properties of a moving window, it is better to choose short length windows ( $\leq 20$ ). Once  $FD_W(t)$  for a special window length  $L_W$  is constructed, then the oscillatory behaviors will be revealed by calculating Fast Fourier Transform (FFT) on the  $FD_W(t)$  data. Before doing FFT,  $FD_W(t)$  must be filtered in order to eliminate any potential subharmonic. Contrary to the calculation of Fractal oscillations, the calculation of Fractal trends needs long windows in order to attenuate as many oscillatory components as possible. As the resulting trends still depended on window length, it is necessary to determine that particular window length at which  $FD_W(t)$  becomes more linear. The optimal window length  $L_W$  is determined by calculating the Pearson's coefficients of linear correlation between the discrete time position of the window ( $t$ ) and calculated Fractal dimension ( $FD_W(t)$ ) (Kalauzi *et al.*, 2009).

## RESULTS AND DISCUSSION

**Classical analysis:** Using Eq. 1, CUSUM values for all the six stations were calculated and plotted against the years. The plots are shown in Fig. 2 below. It is evident that there is a shift in the precipitation regime around the year 1980. Then the total time series can be separated into two samples, 1961-1980 and 1981-2008. Precipitation statistics for the time series 1961-1980 and the entire time series 1961-2008 have been computed and tabulated in Table 1. Although the 't'-test shows that it cannot reject the null hypothesis that the time series 1961-1980 and time series 1981-2008 come from one population, the graphical illustrations still show the existence of change of precipitation regime. To further reveal the trends of precipitation clearly, the variance and the mean of the time series (monthly precipitation data) will be computed for different

sample size. Usually, the variance and mean change as the function of the number of samples. In this study, we computed the variances for 24, 72, 120, 160, 216, 264, 312, 360, 408, 456, 504 and 552 data points. The results were shown in Fig. 3 and variance drops can obviously be observed. Especially, when the length of the samples was increased to 120, the variances in the six stations decreased sharply. The turning point corresponds to the year 1981, which is consistent with the prediction of the intervention analysis that the precipitation regime changed around 1980. Next, the mean values of the time series using the same sample sizes that were used for the variance. Analogously, there are also obvious decline in the mean values. Piecewise linear regressions were performed with breaking point to illustrate the trends of precipitation explicitly. Figure 4 gives calculated mean precipitation and the corresponding regressed lines for

the six gauge stations. The relationship between the mean precipitation and time for the six gauge stations are respectively:

$$\begin{aligned} \text{Shidao : Mean} &= [79.83 - 0.047 t \text{ (months)}] \\ (t \leq 249) &= [70.77 - 0.0108 t \text{ (months)}] \\ (t > 249) R^2 &= 0.94 p < 0.01 \end{aligned} \quad (2)$$

$$\begin{aligned} \text{Chengshantou : Mean} &= [69.8 - 0.0493 t \text{ (months)}] \\ (t \leq 225) &= [60.8 - 0.0093 t \text{ (months)}] \\ (t > 225) R^2 &= 0.92 p < 0.02 \end{aligned} \quad (3)$$

$$\begin{aligned} \text{Weihai : Mean} &= [64.9 - 0.0425 t \text{ (months)}] \\ (t \leq 99) &= [62.3 - 0.0154 t \text{ (months)}] \\ (t > 99) R^2 &= 0.76, p < 0.01 \end{aligned} \quad (4)$$

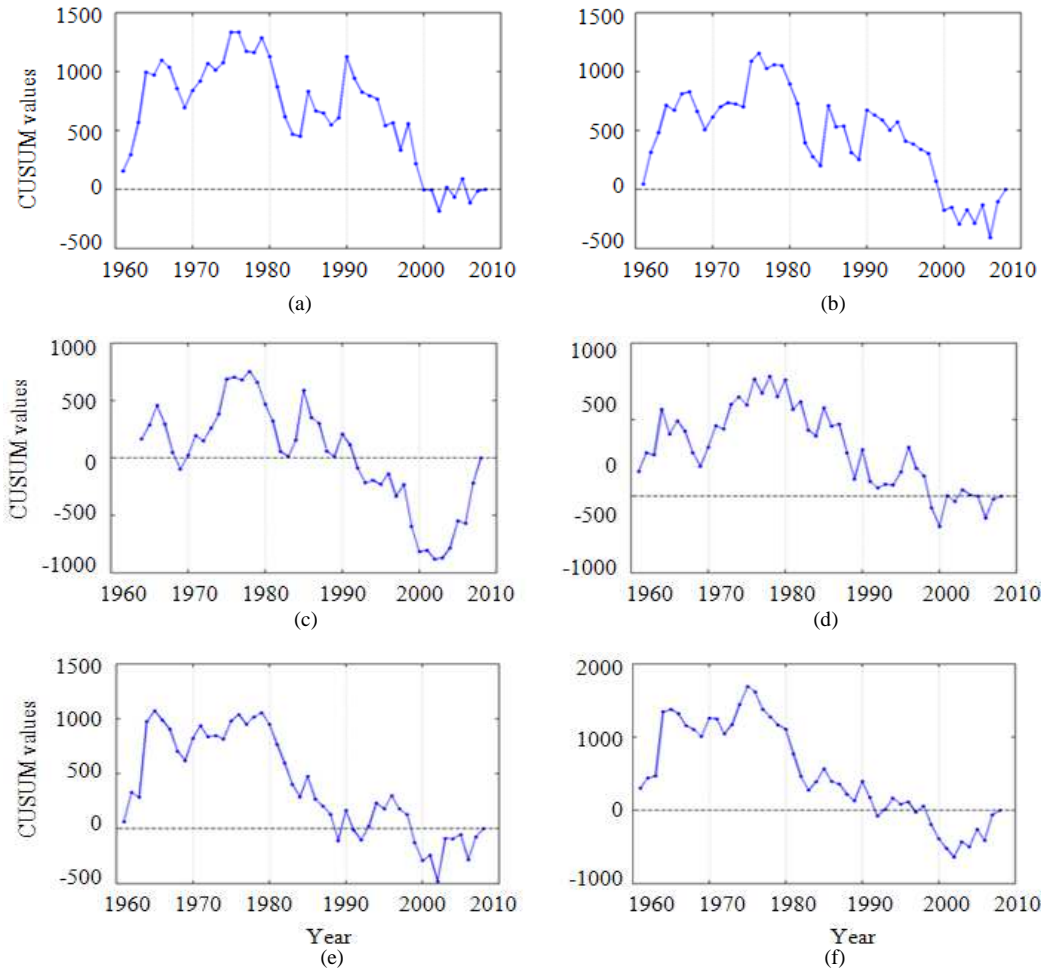


Fig. 2: Graphically illustrations of CUSUM values using annual precipitation data. (a) Shidao; (b) Chengshantou; (c) Weihai; (d) Longkou; (e) Laiyang; (f) Haiyang

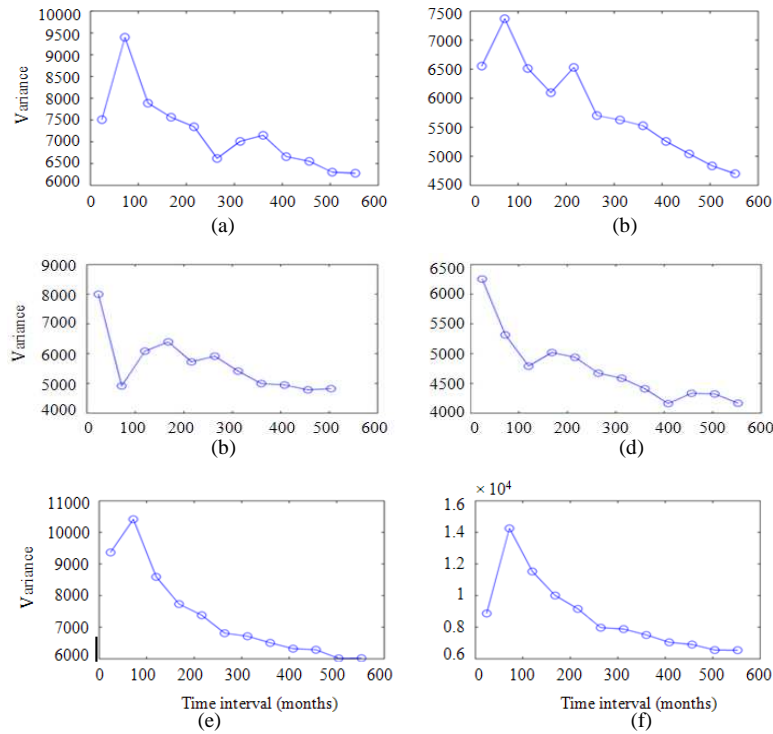


Fig. 3: Relationship between time series variance (monthly precipitation) and sample size. (a)Shidao; (b) Chengshantou; (c) Weihai; (d) Longkou; (e) Laiyang; (f) Haiyang

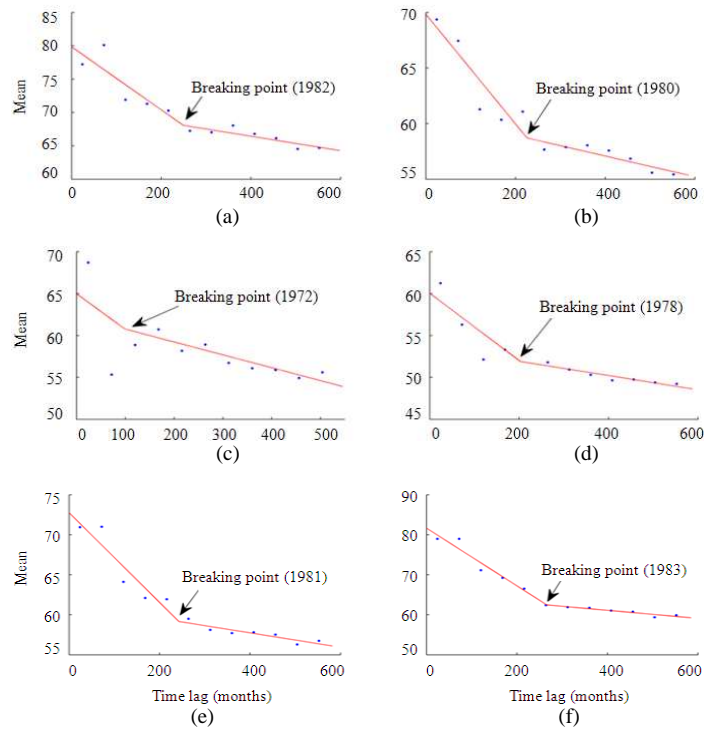


Fig. 4: Dependence of time series mean with sample size and the corresponding piecewise linear regression. (a) Shidao; (b) Chengshantou; (c) Weihai; (d) Longkou; (e) Laiyang; (f) Haiyang

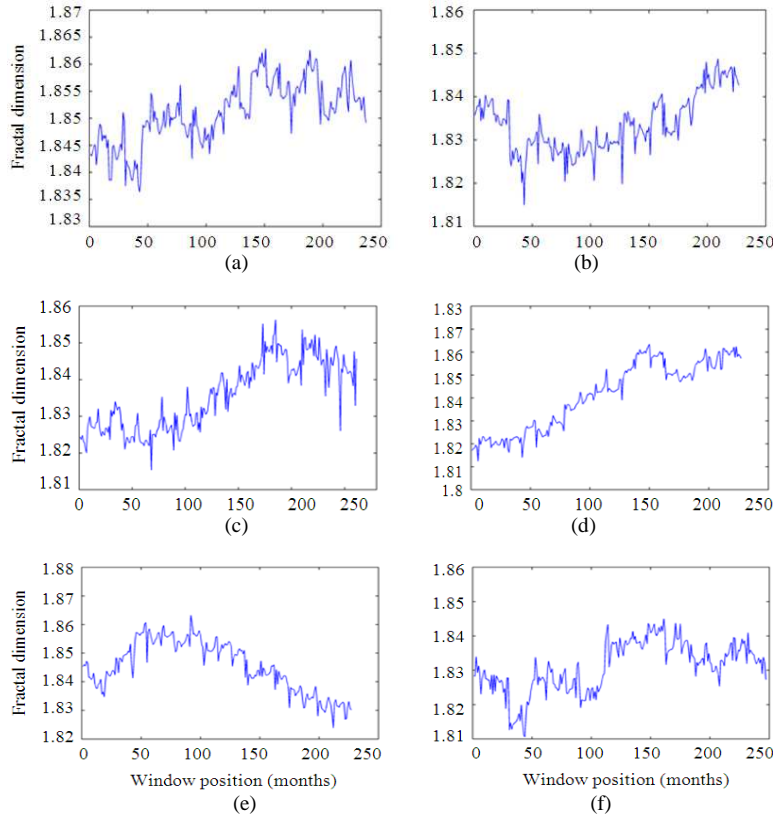


Fig. 5: Fractal trends, calculated by applying optimal length moving windows (a: 330; b: 350; c: 280; d: 350; e: 300; f: 330) for calculation of (a) Shidao; (b) Chengshantou; (c) Weihai; (d) Longkou; (e) Laiyang; (f) Haiyang

$$\begin{aligned} \text{Longkou: Mean} &= [60 - 0.0402 t \text{ (months)}] \\ (t \leq 203) &= [53.6 - 0.0058 t \text{ (months)}] \\ (t > 203), R^2 &= 0.86, p < 0.01 \end{aligned} \quad (5)$$

$$\begin{aligned} \text{Laiyang: Mean} &= [72.7 - 0.056 t \text{ (months)}] \\ (t \leq 242) &= [61.3 - 0.009 t \text{ (months)}] \\ (t > 242), R^2 &= 0.93, p < 0.01 \end{aligned} \quad (6)$$

$$\begin{aligned} \text{Haiyang: Mean} &= [81.6 - 0.0722 t \text{ (months)}] \\ (t \leq 266) &= [65.1 - 0.0101 t \text{ (months)}] \\ (t > 266), R^2 &= 0.94, p < 0.01 \end{aligned} \quad (7)$$

From Eq. 2-7 and Fig. 4, it can be seen that the breaking point from piecewise regression are almost around 1980, although the result of piecewise regression from Weihai gauge station does not support this conjecture.

**Nonlinear study:** Nonlinear approach is more and more widely used to study the complicated dynamics of time series. The consecutive difference method is one newly developed a nonlinear approach that can be used

to measure the complicity of a time series (Higuchi, 1988). In this study, multifractal analysis is based on the Fractal dimension that is computed from consecutive different. The trend and oscillations of the time series of precipitation data were studied respectively.

Fractal trend will firstly be investigated. Figure 5 illustrates the FDW (t) with respect to window positions. In order to obtain the most linear FDW (t), the optimal window length is chosen that corresponds to the maximized Pearson's correlation coefficient. Obviously, the optimal window lengths for the six time series are different. From Fig. 5, we can see that the Fractal dimensions for the six time series ranged from 1.81-1.86, although the Fractal trends are not identical and with oscillations. Actually, except the time series from the Laiyang gauge station, Fractal dimensions of time series from all the other five stations are increasing.

Secondly, the rhythms of window Fractal dimensions were analyzed. As mentioned above, six short window lengths (10, 12, 14, 16, 18 and 20) were selected. Consulting some previous studies, window length with more than 10 samples is properly to assess the Fractal oscillations.

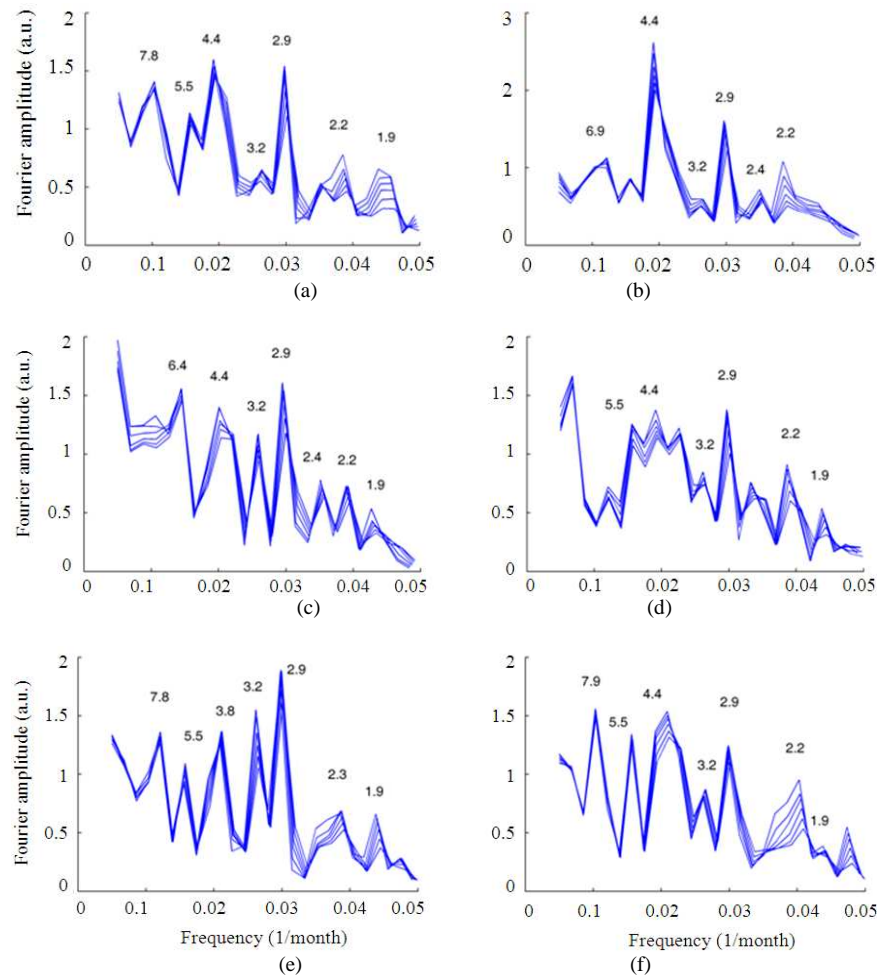


Fig. 6: Fourier amplitude of Fractal dimension rhythms. In each panel, all amplitude spectra obtained by 6 different window lengths (10-20 samples) are illustrated. (a) Shidao (b) Chengshantou (c) Weihai (d) Longkou (e) Laiyang (f) Haiyang

Then  $FD_w(t)$  for the six window lengths will be calculated and be detrended using low-pass attenuation technique. The corresponding cutoff frequencies were 0.05-0.1 (1/month), therefore only components having Fourier periods larger than 1.67 years could be shown. The Fractal rhythms for monthly precipitation from the six gauge stations are presented in Fig. 6. The detected peaks of the Fractal rhythms for the six stations are similar. For example, the dominant rhythms correspond to 1.9, 2.2-2.3, 2.9, 3.2, 4.4, 5.5 and 7.8-7.9 years. An interesting phenomenon is that the detected 2.2 and 4.4 years Fractal oscillations were consistent with some other Fractal oscillations of precipitation time series in Europe and South America (Kalauzi *et al.*, 2009; Millan *et al.*, 2008).

## CONCLUSION

This study focused on identifying the long-term changes in the precipitation over Shandong peninsula, China. The period that the study covers starts from 1961 and extends to 2008 and the precipitation data come from six gauge stations. Both classical statistics and nonlinear analyses have been used to interpret the precipitation change.

First, the turning points of the precipitation regime were detected by intervention analysis. From the graphical illustrations of CUSUM values, it can be easily found that the turning points are around 1980. Some previous studies showed the turning points of precipitation or other climatic variables also occurs around 1980 (Millan *et al.*, 2008; Parida and Moalafhi, 2008). Although this consistency cannot be treated as

the strict evidence of global change, it deserves more study on this topic in future. Particularly, if more precipitation data from a continental scale is available, more sound and interesting results will be obtained. Second, the trend of variance and mean of monthly precipitation was analyzed. It was found that both the variance and mean decreased against the number of samples (month in this study). The decreasing of variance can be explained by the decreasing of intensity of extreme precipitation in recent years. The decreasing of rainfall extremes has a remarkable impact on water resource recovery, which is also one of the most adverse impacts of climate change on local environment in Shandong.

Second, piecewise regression also revealed the two precipitation regimes and precipitation trends. On the other hand, the breaking points verified again that the precipitation regime changed around 1980. All in all, both intervention analysis and piecewise linear regression showed a clear sign of precipitation decreasing. Change in precipitation regime is becoming an increasingly important component that needs to be considered in managing fresh water resources. Especially, the fresh water resources in Shandong Peninsula are under pressure not only from rapidly growing demands due to population increase and economic development but also from seawater intrusion. The trend analysis of precipitation in the present study implies that the problem of water shortage in Shandong peninsula will be more severe. In order to mitigate and even to solve the water shortage problem, some measures such as water transferring, waste water recycling and sea water desalination should be considered (Wang *et al.*, 2003).

At last, the complexity of the precipitation time series was analyzed by computing the Fractal dimension of the precipitation time series. Both the Fractal trends and rhythms were detected through analyzing the window Fractal dimension. The Fractal dimensions were considerably larger than 1.8, which means that the time series of precipitation time series show short-term variations. Although the distances between the six stations are not too long, there are slight differences between the Fractal trends of precipitation time series of the six gauge stations. It is due to terrain differences since the Shandong peninsula is a hilly peninsula where the terrain is an important factor that affects local precipitation. Moreover, the major periods of Fractal dimension variation were detected by Fourier analysis. Most interestingly, the 4.4 year period is consistent with the periods discriminated in some previous studies. Millan *et al.* (2008) and Kalauzi *et al.* (2009) suspected that this 4.4 year period is related to ENSO events. It seems

that the 4.4 period in this study can also be linked to ENSO, since the precipitation in Shandong peninsula is mainly affected by Eastern Asian monsoon and Pacific tropical depression (Yan *et al.*, 2004). Besides 4.4 year period, other periods are also similar to that in other references, such as the precipitation data in Ecuador (Kalauzi *et al.*, 2009). Along with the turning point of precipitation regime, the consistency of the period of Fractal oscillations stimulate us to ask a question that whether the precipitation change is caused by global change? As noted in the introduction, the aim and scope of this study are merely to investigate the trends and complexity of precipitation in Shandong peninsula. However, the results and conclusions obtained here is not enough to answer the above question. Therefore, to fully investigate the trends of climate change, precipitation data must be investigated in association with other climatic variables such as evaporation and temperature.

#### ACKNOWLEDGEMENT

This study was supported by the National Natural Science Foundation of China (No.31000197) to GM, as well as Knowledge Innovation Project of Chinese Academy of Sciences (No. KZCX2-391 EW-QN209).

#### REFERENCES

- Higuchi, T., 1988. Approach to an irregular time series on the basis of the Fractal theory. *Physica D: Nonlinear Phenomena*, 31: 277-283. DOI: 10.1016/0167-2789(88)90081-4
- Kalauzi, A., M. Cukic, H. Millan, S. Bonafoni and R. Biondi, 2009. Comparison of Fractal dimension oscillations and trends of rainfall data from Pastaza Province, Ecuador and Veneto, Italy. *Atmospheric Res.*, 93: 673-679. DOI: 10.1016/j.atmosres.2009.02.007
- Kalauzi, A., S. Spasic, M. Culic, G. Grbic and L.J. Martac, 2005. Consecutive differences as a method of signal Fractal analysis. *Fractal's*, 13: 283-292. DOI: 10.1142/S0218348X05002933
- Label, T. and A. Ali, 2009. Recent trends in the central and western Sahel rainfall regime (1990-2007). *J. Hydrol.*, 375: 52-64. DOI: 10.1016/j.jhydrol.2008.11.030
- Millan, H., A. Kalauzi, G. Llerena, D. Sucoshany and Piedra, 2008. Climatic trends in the Amazonian area of Ecuador: Classical and multifractal analyses. *Atmospheric Res.*, 88: 355-366. DOI: 10.1016/j.atmosres.2007.11.030



- Onof, C. and K. Arnbjerg-Nielsen, 2009. Quantification of anticipated future changes in high resolution design precipitation for urban areas. *Atmospheric Res.*, 92: 350-363. DOI: 10.1016/j.atmosres.2009.01.014
- Pal, I. and A. Al-Tabbaa, 2009. Trends in seasonal precipitation extremes-An indicator of 'climate change' in Kerala, India. *J. Hydrol.*, 367: 62-69. DOI: 10.1016/j.jhydrol.2008.12.025
- Parida, B.P. and D.B. Moalafhi, 2008. Regional rainfall frequency analysis for Botswana using L-Moments and radial basis function network. *Phys. Chem. Earth*, 33: 614-620. DOI: 10.1016/j.pce.2008.06.011
- Toms, J.D. and M.L. Lesperance, 2003. Piecewise regression: A tool for identifying ecological thresholds. *Ecology*, 84: 2034-2041. DOI: 10.1890/02-0472
- Wang, Y., Y. Zhang and W. Zheng, 2003. Water resources and potential of seawater desalination in Shandong peninsula. *Desalination*, 157: 269-276. DOI: 10.1016/S0011-9164(03)00406-5
- Yan, S., S. Zhou and H. Li, 2004. Diagnostic analysis of a rainstorm in Shandong peninsula influenced by a distant tropical depression. *J. Tropical Meteorolo.*, 14: 73-76.
- Zheng, B., Q. Guo, Y. Wei, H. Deng and K. Ma *et al.*, 2008. Water source protection and industrial development in the Shandong Peninsula, China from 1995 to 2004: A case study. *Resou. Conser. Recycl.*, 52: 1065-1076. DOI: 10.1016/j.resconrec.2008.04.008